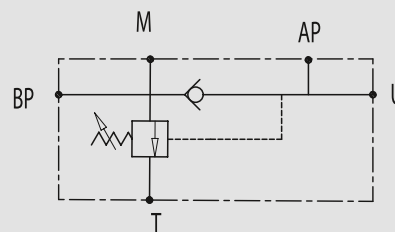


## Hochdruck-Niederdruck-Abschaltventil Direktmontage auf Pumpe



HYDRAULIC DIAGRAM



### TWO PUMP LOW UNLOADING VALVES FLANGEABLE ON LOW-PRESSURE PUMP

#### USE AND OPERATION:

This valve is used in a 2 parallel-working pumps circuit in order to release the excess of the higher flow pump to the tank when this gets the required pressure setting. Since this moment and on the actuator works with the lower flow pumps at higher pressure, consuming less energy. This valve is designed for direct flanging on lower flow pump. To adjust the high pressure, you have to mount a in line relief valve or a relief valve on the spool valve.

#### MATERIALS AND FEATURES:

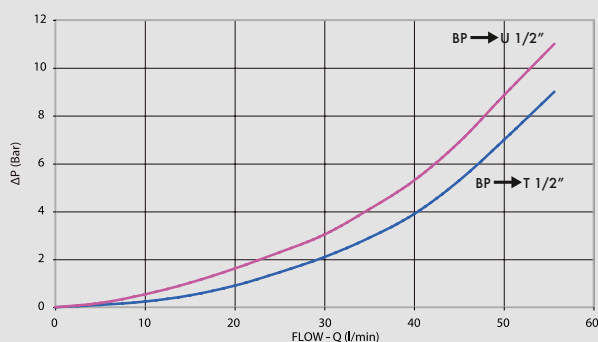
Body: zinc-plated steel  
Internal components: grounded and hardened steel  
Seals: BUNA N standard  
Tightness: minor leakage

#### APPLICATIONS:

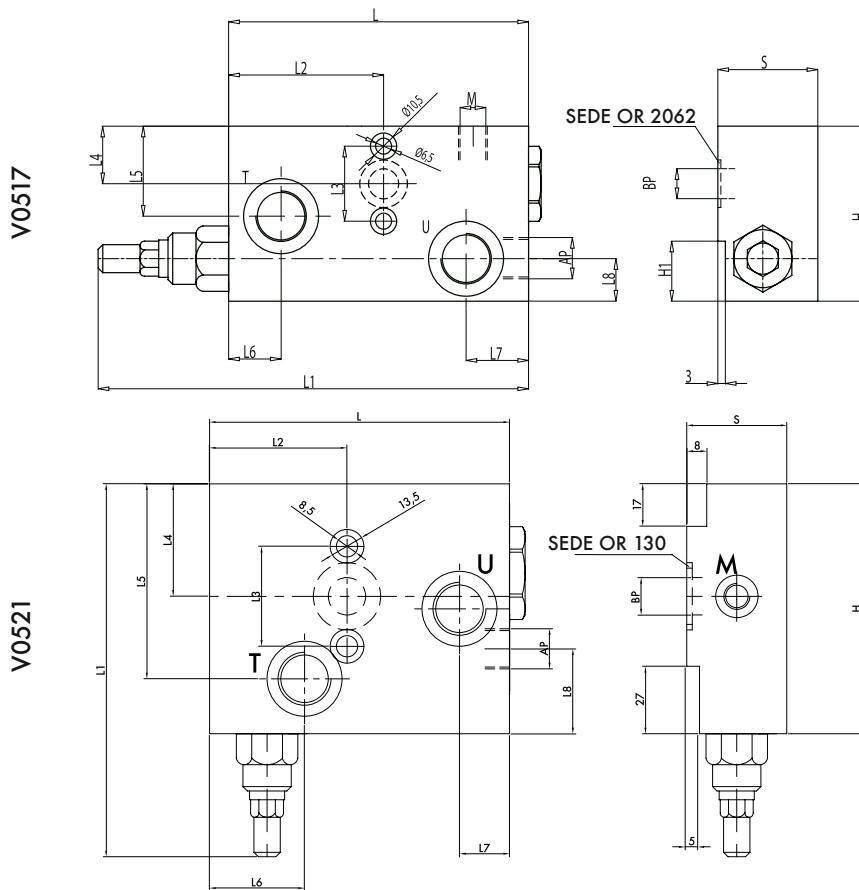
Connect BP to the higher flow pump, AP to the lower flow pump, T to the tank, M to the eventual manometer and U as for necessity.

Oil temperature: 50° C - Oil viscosity: 30 cSt

#### PRESSURE DROPS CURVE



CODE	TYPE	MAX FLOW Lt. / min			MAX PRESSURE Lt. / min		WEIGHT Kg
		AP	BP	T	AP	BP	
<b>V0517</b>	VEP FLP 1/2"	20	40	60	320	80	2,300
<b>V0521</b>	VEP FLP 1/2" IFF 40	20	40	60	320	80	2,300



CODE	TYPE	AP GAS	BP mm	M GAS	T - U GAS	L mm	L1 mm	L2 mm	L3 mm	L4 mm	L5 mm	L6 mm	L7 mm	L8 mm	H1 mm	H mm	S mm
<b>V0517</b>	VEP FLP 1/2"	G 3/8"	11	G 1/4"	G 1/2"	120	170	61	30	23	36	21	25	17	24	70	40
<b>V0521</b>	VEP FLP IFF 1/2" 40	G 3/8"	15	G 1/8"	G 1/2"	120	150	55	40	45	78	38	20	34	/	100	40