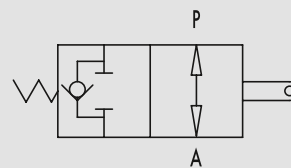


Abschaltventil - unbetätigt offen

TYPE
V-FCR 1T



HYDRAULIC DIAGRAM



END STROKE VALVES, NORMALLY OPENED

USE AND OPERATION:

This valve is used to stop oil inlet in a hydraulic circuit or to stop actuator's stroke (normally opened valve). The valve closing, obtained by pulling or pushing the slider, allows an immediate and total stop of the oil flow.

MATERIALS AND FEATURES:

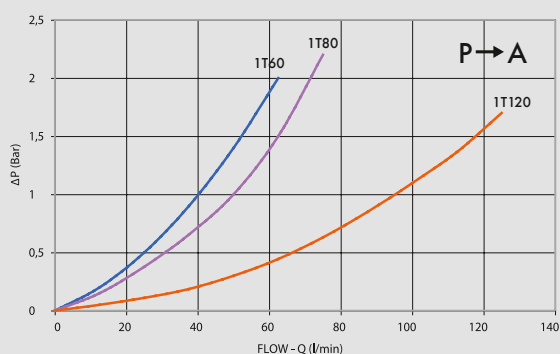
Body: cast iron
Internal parts: grounded and hardened steel
Seals: BUNA N standard
Tightness: minor leakage

APPLICATIONS:

Connect P to the distributor and A to the circuit or to the actuator. When slider is operating, flow is blocked from P towards A, whilst the check valve enables free oil flow in the reverse direction (from A towards P).

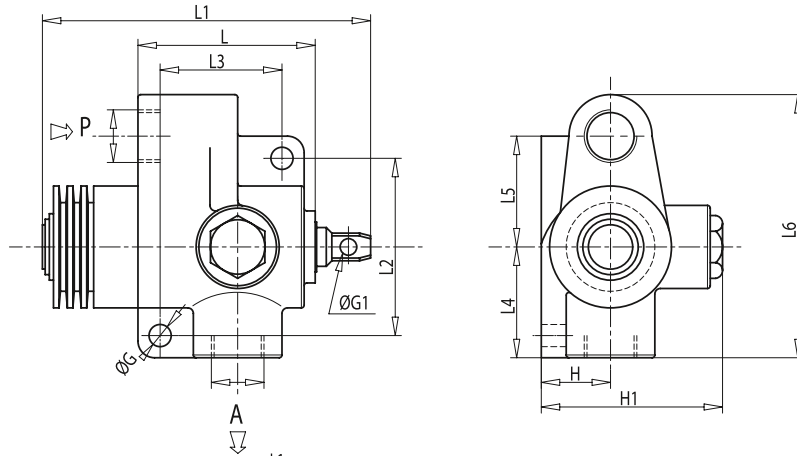
PRESSURE DROPS CURVE

Oil temperature: 50° C - Oil viscosity: 30 cSt

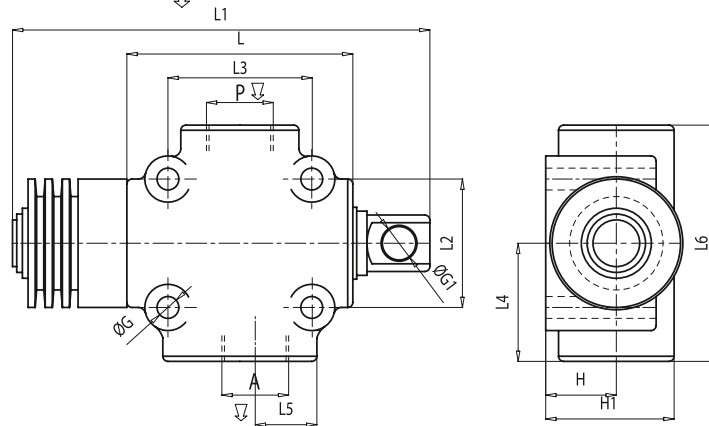


CODE	TYPE	MAX FLOW Lt. / min	MAX PRESSURE Bar	START CLOSING mm	POWER Kg (±10%)	MAX STROKE mm	POWER Kg (±10%)
V0824	V-FCR 1T 60	60	350	7	6,5	20,5	18
V0826	V-FCR 1T 80	80	350	7	6,5	20,5	18
V0825	V-FCR 1T 120	120	350	9	33	15,5	50

V-FCR 1T 60-80



V-FCR 1T 120



CODE	TYPE	A-P GAS	L mm	L1 mm	L2 mm	L3 mm	L4 mm	L5 mm	L6 mm	ØG mm	ØG1 mm	H mm	H1 mm	WEIGHT Kg.
V0824	V-FCR 1T 60	G 3/8"	69	130	66	45	45	41	103	8,5	6,5	26	68	1,628
V0826	V-FCR 1T 80	G 1/2"	69	130	66	45	45	41	103	8,5	6,5	26	68	1,616
V0825	V-FCR 1T 120	G 3/4"	88	173	50	56	46	23,5	92	8,5	13	27,5	50	2,112