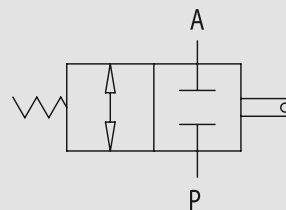


## Abschaltventil - unbetätigt geschlossen

TYPE  
**V-FCR 2T**



HYDRAULIC DIAGRAM



## END STROKE VALVES, NORMALLY CLOSED

### USE AND OPERATION:

This valve is used to enable oil inlet in a hydraulic circuit (normally closed valve). The valve opens by pulling or pushing the slider.

### MATERIALS AND FEATURES:

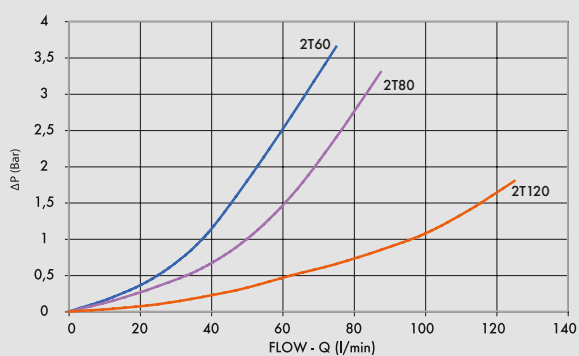
Body: cast iron  
Internal parts: grounded and hardened steel  
Seals: BUNA N standard  
Tightness: minor leakage

### APPLICATIONS:

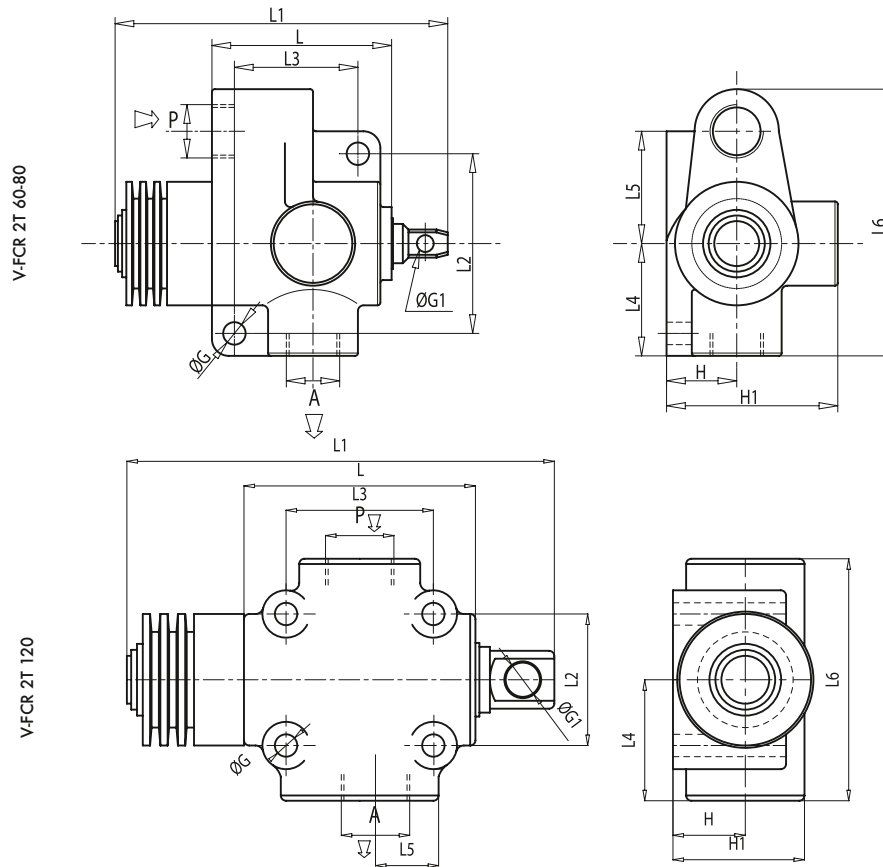
Connect independently A and P to the distributor and to the circuit. When slider is operating, flow is free in both directions, vice versa it is blocked.

PRESSURE DROPS CURVE

Oil temperature: 50° C - Oil viscosity: 30 cSt



CODE	TYPE	MAX FLOW Lt. / min	MAX PRESSURE Bar	START CLOSING mm	POWER Kg (±10%)	MAX STROKE mm	POWER Kg (±10%)
<b>V0820</b>	V-FCR 2T 60	60	350	7	6,5	20,5	18
<b>V0822</b>	V-FCR 2T 80	80	350	7	6,5	20,5	18
<b>V0823</b>	V-FCR 2T 120	120	350	9	33	15,5	50



CODE	TYPE	A-P GAS	L mm	L1 mm	L2 mm	L3 mm	L4 mm	L5 mm	L6 mm	ØG mm	ØG1 mm	H mm	H1 mm	WEIGHT Kg.
<b>V0820</b>	V-FCR 2T 60	G 3/8"	69	130	66	45	45	41	103	8,5	6,5	26	68	1,648
<b>V0822</b>	V-FCR 2T 80	G 1/2"	69	130	66	45	45	41	103	8,5	6,5	26	68	1,652
<b>V0823</b>	V-FCR 2T 120	G 3/4"	88	179	50	56	46	23,5	92	8,5	13	27,5	50	2,204