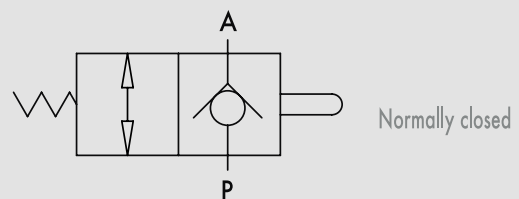


Abschaltventil - stößelbetätigt - unbetätigt geschlossen

TYPE
VF-NC



HYDRAULIC DIAGRAM



PUSHBUTTON END STROKE VALVES, NORMALLY CLOSED

USE AND OPERATION:

This valve allows oil passage in a hydraulic circuit (normally closed valve). Once the slider is set into action, oil flow is free from P to A. It can be used:

- a) to set the sequence of 2 actuators;
- b) as end strokes valve, where flow is directly connected to the tank.

MATERIALS AND FEATURES:

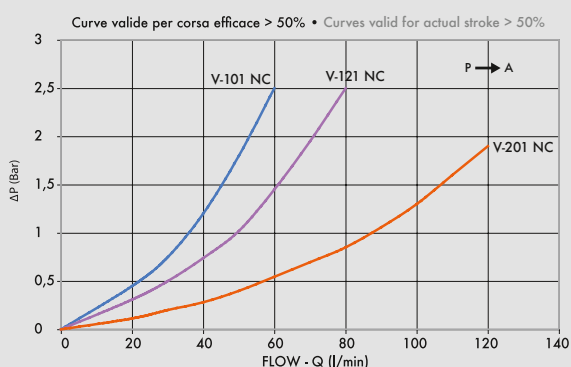
Body: zinc-plated steel
Internal parts: grounded and hardened steel
Seals: BUNA N standard
Ball type: any leakage
Maximum stroke: 13 mm
Prompt opening

APPLICATIONS:

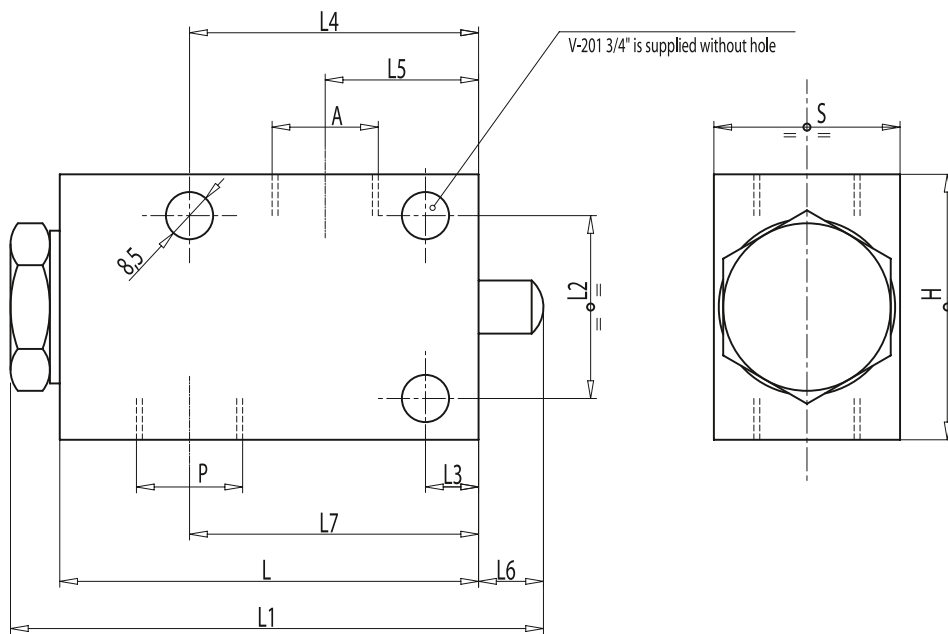
Connect A directly to the tank and P as for necessity.
Mounting scheme can vary according to the use.

PRESSURE DROPS CURVE

Oil temperature: 50° C - Oil viscosity: 30 cSt



CODE	TYPE	MAX FLOW Lt. / min	MAX PRESSURE Bar
V0827	V - 101 3/8" NC	50	350
V0828	V - 121 1/2" NC	70	350
V0829	V - 201 3/4" NC	100	350



CODE	TYPE	A-P GAS	L mm	L1 mm	L2 mm	L3 mm	L4 mm	L5 mm	L6 mm	L7 mm	H mm	S mm	WEIGHT Kg.
V0827	V-101 3/8" NC	G 3/8"	80	105	35	10	55	30	14	55	50	35	0,962
V0828	V-121 1/2" NC	G 1/2"	80	105	35	10	55	28,5	14	55	50	35	0,934
V0829	V-201 3/4" NC	G 3/4"	88	115	50	20	68	23	14	61	70	45	0,860