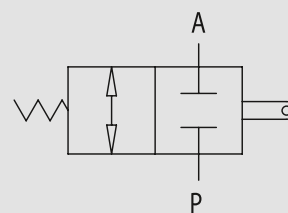


Abschaltventil - rollhebelbetätigt - unbetätigt geschlossen

TYPE
V-FCC NC



HYDRAULIC DIAGRAM



MECHANICAL DRIVE END STROKE VALVES, NORMALLY CLOSED

USE AND OPERATION:

This valve allows oil passage in a hydraulic circuit (normally closed valve). Once the slider is set into action, oil flow is free from P to A. It can be used:

- a) to set the sequence of 2 actuators;
- b) as an end strokes valve, where flow is directly connected to the tank.

MATERIALS AND FEATURES:

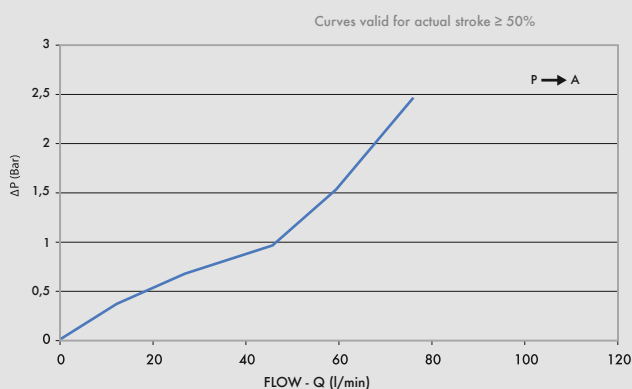
Body: zinc-plated steel
Internal parts: grounded and hardened steel
Seals: BUNA N standard
Ball type: any leakage

APPLICATIONS:

Connect A directly to the tank and P as for necessity.
Mounting scheme can vary according to the use.

PRESSURE DROPS CURVE

Oil temperature: 50° C - Oil viscosity: 30 cSt



CODE	TYPE	MAX FLOW Lt. / min	MAX PRESSURE Bar
V0815	V - FCC 1/2" NC	70	350

