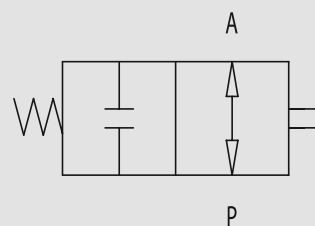


# Abschaltventil - stößelbetätigt - unbetätigt offen

TYPE  
**VF-NA**



HYDRAULIC DIAGRAM



## PUSHBUTTON END STROKE VALVES, NORMALLY OPENED

### USE AND OPERATION:

This valve is used to block oil passage in a hydraulic circuit (normally opened valve). The valve closes by pushing mechanically the slider.

### MATERIALS AND FEATURES:

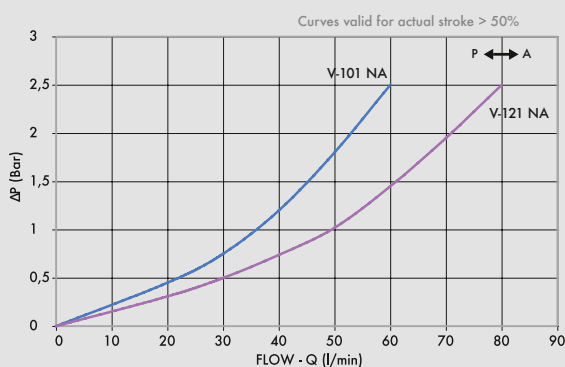
Body: zinc-plated steel  
Internal parts: grounded and hardened steel  
Seals: BUNA N standard  
Ball type: minor leakage  
Maximum stroke: 15 mm  
Closing after 4 mm stroke

### APPLICATIONS:

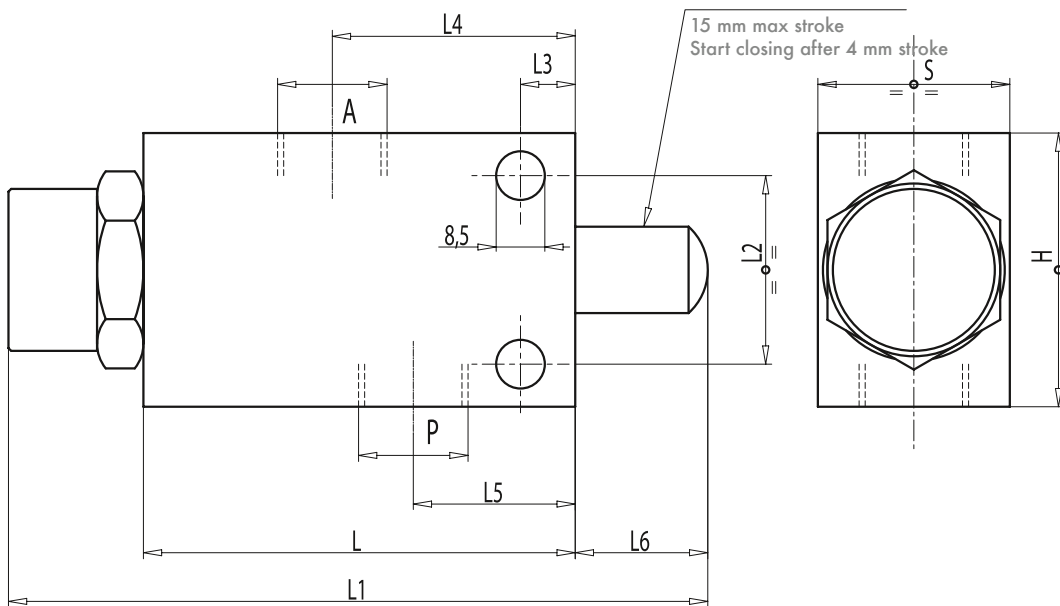
Connect independently A or P to the distributor and to the circuit. When slider is operating flow is blocked in both direction, vice versa it is free.

### PRESSURE DROPS CURVE

Oil temperature: 50° C - Oil viscosity: 30 cSt



CODE	TYPE	MAX FLOW Lt. / min	MAX PRESSURE Bar
<b>V0817</b>	V - 101 3/8" NA	45	350
<b>V0818</b>	V - 121 1/2" NA	60	350



CODE	TYPE	A-P GAS	L mm	L1 mm	L2 mm	L3 mm	L4 mm	L5 mm	L6 mm	H mm	S mm	WEIGHT Kg.
<b>V0817</b>	V-101 3/8" NA	G 3/8"	80	129	35	8	45	30	24	56	35	1,240
<b>V0818</b>	V-121 1/2" NA	G 1/2"	80	129	35	8	45	30	24	62	35	1,380