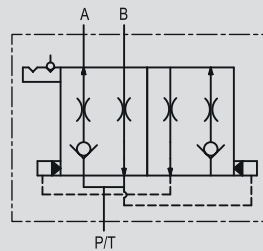


HYDRAULIC DIAGRAM



## VALVE FOR SEEDING ROW MARKER MACHINE

### USE AND OPERATION:

This type of valves is used on seeding machines to handle the row marker. It allows the automatic ascent/descent inversion of single and double effect actuators, loading and unloading the port P/T.

### MATERIALS AND FEATURES:

Body: zinc-plated steel.  
Internal parts: hardened and ground steel.  
Seals: BUNA N standard  
Tightness: minor leakage.

### APPLICATIONS:

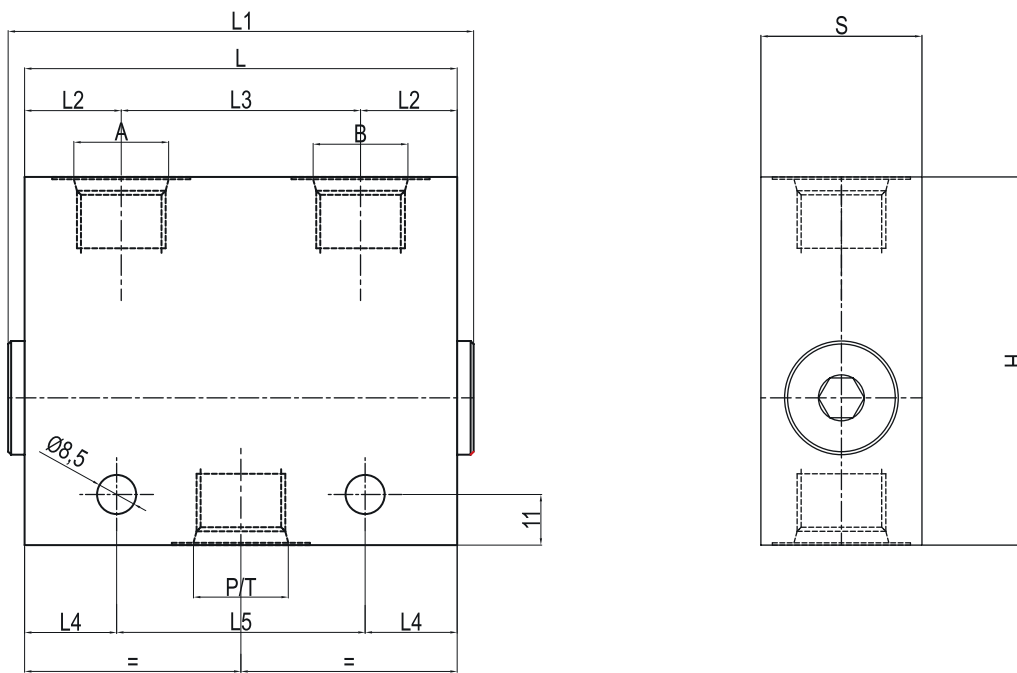
Connect P/T to the power and A and B to the actuator.

### ON REQUEST:

The valve can be supplied with:

- 1/4" female adaptation
- Fitting for DIN 12L hose connection

CODE	TYPE	MAX PRESSURE Bar
<b>V1450</b>	VDSF 3/4" - 16 UNF	350



CODE	TYPE	A - B P / T SAE	L mm	L1 mm	L2 mm	L3 mm	L4 mm	L5 mm	L6 mm	L7 mm	H mm	S mm	WEIGHT Kg.
<b>V1450</b>	VDSF 3/4" - 16 UNF	3/4" - 16	94	102	21	52	26	40	54	12	80	35	1,830

14