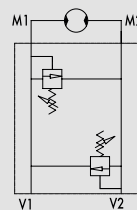


## Schockventil - flanschbar für Samhydraulik Motoren AG - AR

TYPE  
**VAU AG-AR**



HYDRAULIC DIAGRAM (with brake unclapping)



## DUAL CROSS RELIEF VALVE FLANGEABLE ON SAMHYDRAULIK MOTORS AG - AR

### USE AND OPERATION:

Made up by 2 relief valves with crossed tank, this valve is used to block pressure to a certain setting in the 2 ports of an actuator/hydraulic motor. It's ideal to provide protection against sudden shock pressures and to adjust different pressures in the 2 ports of an hydraulic circuit as well. Direct flange is ideal for Samhydraulik motors type AG-AR and provides a maximum safety, very low pressure drops and solid installation.

### MATERIALS AND FEATURES:

Body: zinc-plated steel.  
Internal parts: hardened and ground steel.  
Seals: BUNA N standard  
Poppet type: minor leakage

### APPLICATIONS:

Flange M1 and M2 directly to the motor and connect ports V1 and V2 to pressure flow.

### ON REQUEST

- different setting range (see the table)
- other setting available (CODE/T000 please specify the desired setting)

### PRESSURE DROPS CURVE

Oil temperature: 50° C - Oil viscosity: 30 cSt

