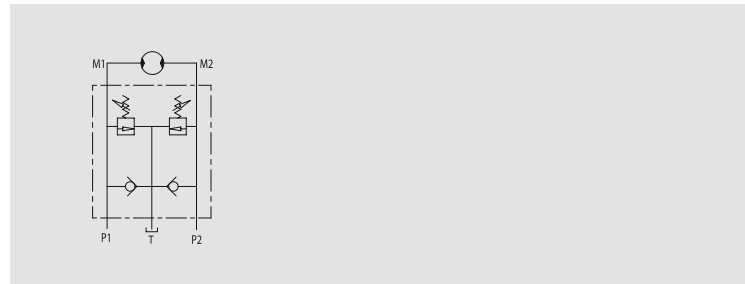


Schockventil mit Nachsaugfunktion

TYPE
VAUAC

HYDRAULIC DIAGRAM



DUAL CROSS RELIEF VALVES WITH ANTI-CAVITATION

USE AND OPERATION:

This valve is used to block pressure to a certain setting in the 2 ports of an hydraulic motor: when it reaches pressure setting, the valve opens allowing pressure relief in T. The relief valve provides overload protection in a fast and accurate way and cavitation is avoid tanks to the check valve. It's suggested to mount set check valves to the tank way out (T).

MATERIALS AND FEATURES:

Body: zinc-plated steel (VAUAC 1/2") and aluminium (VAUAC 3/4")

Internal parts: hardened and ground steel.

Seals: BUNA N standard

Poppet type: minor leakage

APPLICATIONS:

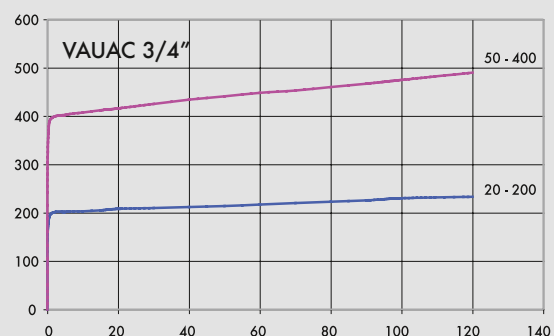
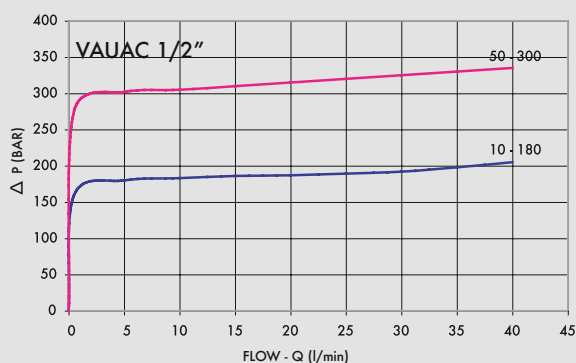
Connect M1 and M2 to the motor and P1 and P2 to the pressure flow. Connect T to the tank. Mounting by the actuator is highly recommended in order to avoid pressure drops and get a prompt duty.

ON REQUEST

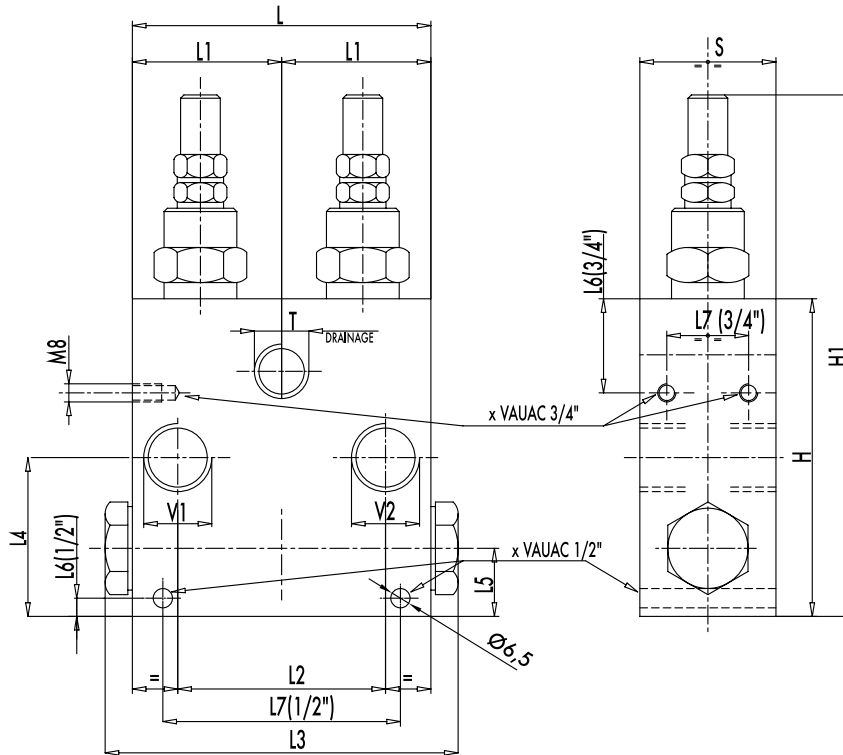
- different setting range (see the table)
- other setting available (CODE/T000: please specify the desired setting)

PRESSURE DROPS CURVE

Oil temperature: 50° C - Oil viscosity: 30 cSt



CODE	TYPE	MAX FLOW Lt. / min
V0508	VAUAC 1/2"	70
V0510	VAUAC 3/4"	110



5

CODE	TYPE	V1 - V2 GAS	T GAS	L mm	L1 mm	L2 mm	L3 mm	L4 mm	L5 mm	L6 mm	L7 mm	H mm	H1 mm	S mm	WEIGHT Kg
V0508	VAUAC 1/2"	G 1/2"	G 1/2"	80	40	42	102	48	24	8	50	112	174	35	2,254
V0510	VAUAC 3/4"	G 3/4"	G 1/2"	110	55	64	132	58	23	36	38	120	182	50	2,534

SPRINGS (VAUAC 1/2")

Setting range (bar)	Pressure increase (bar/turn) Q= 4l/min	Standard setting (bar)
10 - 180 standard	30	90
80 - 300	50	150

SPRINGS (VAUAC 3/4")

Setting range (bar)	Pressure increase (bar/turn) Q= 4l/min	Standard setting (bar)
20 - 200	40	160
50 - 400 standard	80	180

ADJUSTEMENT

CODE/V	• Handknob
CODE/PP	• Arranged for sealing cap
CODE/PP	• Sealing cap