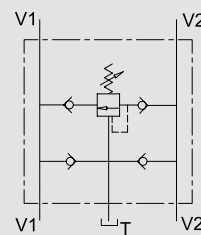
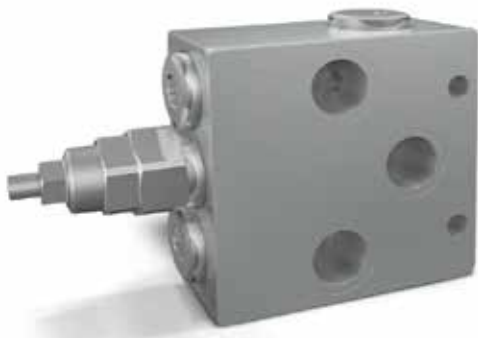


Schockventil mit Nachsaugfunktion und Zentralsteuerung

TYPE
VAA/RU

HYDRAULIC DIAGRAM



DUAL CROSS RELIEF VALVE WITH ANTI-CAVITATION AND SINGLE ADJUSTMENT

USE AND OPERATION:

This valve is used to block pressure to a certain setting in the 2 ports of both hydraulic motor and actuator. The 2 check valves provide overload protection and cavitation is avoid during the slowing down of the actuator. We suggest to mount a set check valve to the tank (T).

MATERIALS AND FEATURES:

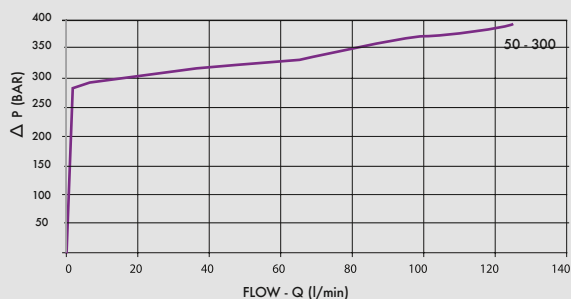
Body: zinc-plated steel.
Internal parts: hardened and ground steel.
Seals: BUNA N standard
Tightness: minor leakage.

APPLICATIONS:

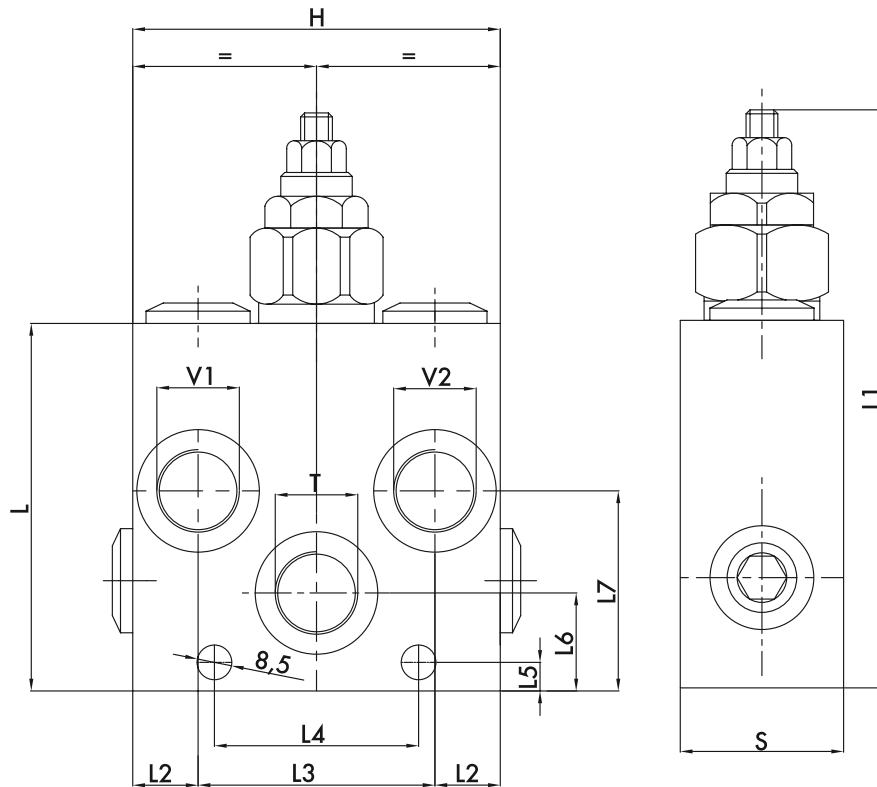
Connect V1 and V2 ports to the motor, the others V1 and V2 ports to the pressure flow and T to the tank. Mounting by the actuator is highly recommended in order to avoid pressure drops and get a prompt duty.

PRESSURE DROPS CURVE

Oil temperature: 50° C - Oil viscosity: 30 cSt



CODE	TYPE	MAX FLOW Lt. / min	PRESSURE RANGE Bar
V0508/RU	VAA/RU 1/2"	60	50 - 300



5

CODE	TYPE	V1 - V2 T GAS	L mm	L1 mm	L2 mm	L3 mm	L4 mm	L5 mm	L6 mm	L7 mm	H mm	S mm	WEIGHT Kg
V0508/RU	VAA/RU 1/2"	G 1/2"	90	142	16	58	50	7	24	49	90	40	2,182

ADJUSTEMENT

CODE/V	• Handknob
CODE/PP	• Arranged for sealing cap
CODE/PP	• Sealing cap