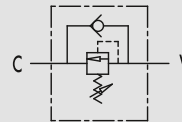


Druckfolgeventil - direktgesteuert

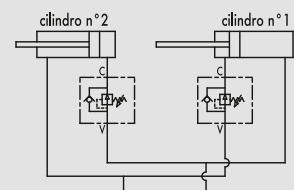
TYPE
VS2C



HYDRAULIC DIAGRAM



APPLICATION SCHEME



DIRECT ACTING SEQUENCE VALVES

USE AND OPERATION:

Sequence valve is used to feed 2 cylinders in sequence: it provides flow to the secondary circuit when a primary circuit function has been completed reaching the pressure setting. Return flow is free. It's ideal for circuits with low pressure on the secondary actuator as the pressures add to.

MATERIALS AND FEATURES:

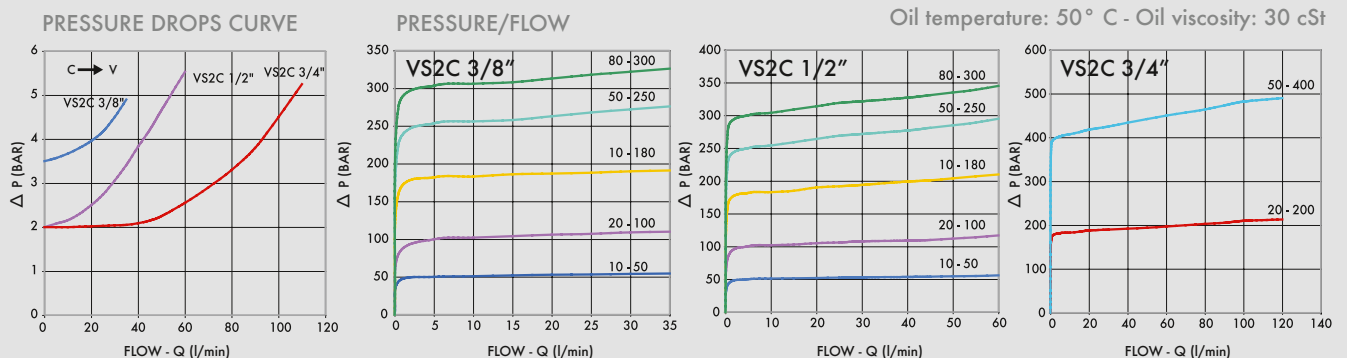
Body: zinc-plated steel.
Internal parts: hardened and ground steel.
Seals: BUNA N standard
Poppet type: minor leakage

APPLICATIONS:

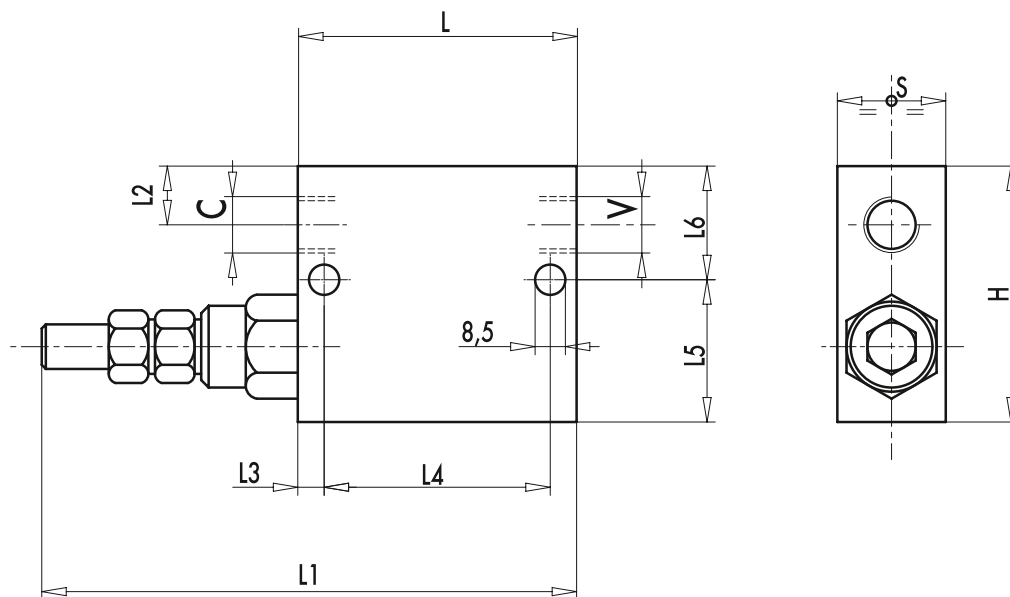
For use with 2 actuators, follow the mounting instructions indicated in the scheme. For different uses, mount the valve keeping into consideration that, when the valve reaches the setting pressure, the flow goes from V towards C, whilst flow is free from C to V.

ON REQUEST

- different setting range (see the table)
- other setting available (CODE/T000 please specify the desired setting)



CODE	TYPE	MAX FLOW lt. / min	PRESSURE RANGE Bar
V0640	VS2C 3/8"	35	350
V0660	VS2C 1/2"	70	350
V0665	VS2C 3/4"	110	400



ADJUSTEMENT

CODE/V	• Handknob
CODE/PP	• Arranged for sealing cap
CODE/PP	• Sealing cap

CODE	TYPE	C - V GAS	L mm	L1 mm	L2 mm	L3 mm	L4 mm	L5 mm	L6 mm	H mm	S mm	WEIGHT Kg
V0640	VS2C 3/8"	G 3/8"	74	146	14	7	55	39	31	70	30	1,172
V0660	VS2C 1/2"	G 1/2"	80	152	15	7	55	37	33	70	30	1,130
V0665	VS2C 3/4"	G 3/4"	100	164	20	10	80	50	50	100	40	2,900

SPRINGS (VS2C 3/8" - 1/2")

Setting range (bar)	Pressure increase (bar/turn) Q= 4l/min	Standard setting (bar)
10 - 50*	7	30
20 - 100	12	75
10 - 180 standard	30	90
50 - 250	45	130
80 - 300	50	150

SPRINGS (VS2C 3/4")

Setting range (bar)	Pressure increase (bar/turn) Q= 4l/min	Standard setting (bar)
20 - 200	40	160
50 - 400 standard	80	180

*For setting less than 70 Bar: Q = 12 l/min