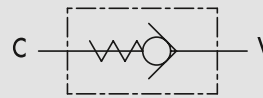


Rückschlagventil - Aussengewinde

TYPE
VU MM

HYDRAULIC DIAGRAM



MALE/MALE CHECK VALVES

USE AND OPERATION:

In the check valves flow is free in one direction and blocked in the reverse one.

MATERIALS AND FEATURES:

Body: zinc-plated steel
Internal parts: hardened and ground steel
Poppet type: any leakage.

APPLICATIONS:

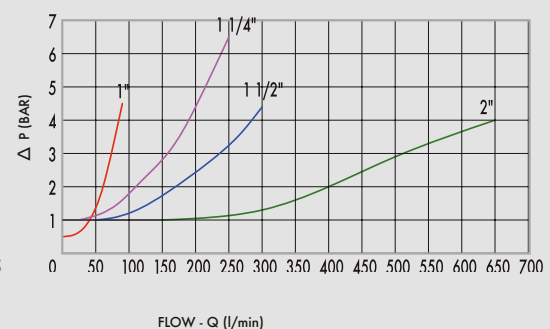
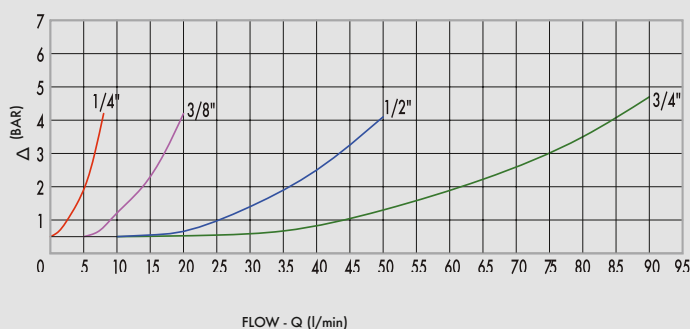
Connect V to the pressure flow and C to the actuator. Flow is free from V to C and blocked in the reverse direction.

ON REQUEST

- Different cracking pressures: 1-3-6-9 bar (please specify the desired cracking pressure in the product description). Set valve is used to keep a hydraulic system under pressure.

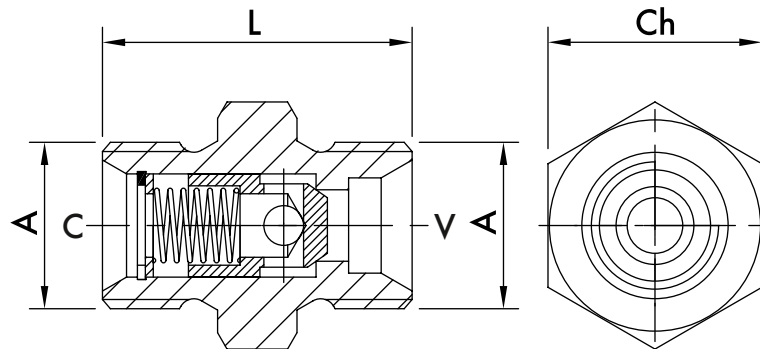
PRESSURE DROPS CURVE

Oil temperature: 50° C - Oil viscosity: 30 cSt



CODE	TYPE	MAX FLOW Lt. / min	MAX PRESSURE Bar
V0594/*	VU MM 1/4"	8	350
V0604/*	VU MM 3/8"	20	350
V0614/*	VU MM 1/2"	50	350
V0624/*	VU MM 3/4"	90	350
V0634/*	VU MM 1"	90	320
V0637/*	VU MM 1" 1/4	250	320
V0638/*	VU MM 1" 1/2	300	320
V0639/*	VU MM 2	650	320

*Please specify the desired spring: cracking pressure 1 (standard) -3 -6 Bar up to 1" size and 1 (standard) - 6 - 9 Bar from 1" 1/4 size.



SPRINGS

code	1 Bar	3 Bar	6 Bar	9 Bar
VU MM1/4"	V0594/1	V0594/3	V0594/6	/
VU MM 3/8"	V0604/1	V0604/3	V0594/6	/
VU MM 1/2"	V0614/1	V0614/3	V0614/6	/
VU MM 3/4"	V0624/1	V0624/3	V0624/6	/
VU MM 1"	V0634/1	/	V0634/6	V0634/9
VU MM 1" 1/4	V0637/1	/	V0637/6	V0637/9
VU MM 1" 1/2	V0638/1	/	V0638/6	V0638/9
VU MM 2"	V0639/1	/	V0639/6	V0639/9

CODE	TYPE	A mm	L mm	Ch mm	WEIGHT kg
V0594/*	VU MM 1/4"	1/4"	32	19	0,033
V0604/*	VU MM 3/8"	3/8"	34	22	0,053
V0614/*	VU MM 1/2"	1/2"	39	27	0,092
V0624/*	VU MM 3/4"	3/4"	45	32	0,142
V0634/*	VU MM 1"	1"	55	40	0,288
V0637/*	VU MM 1" 1/4	1" 1/4	70	50	0,594
V0638/*	VU MM 1" 1/2	1" 1/2	86	55	0,910
V0639/*	VU MM 2	2"	102	70	1,800