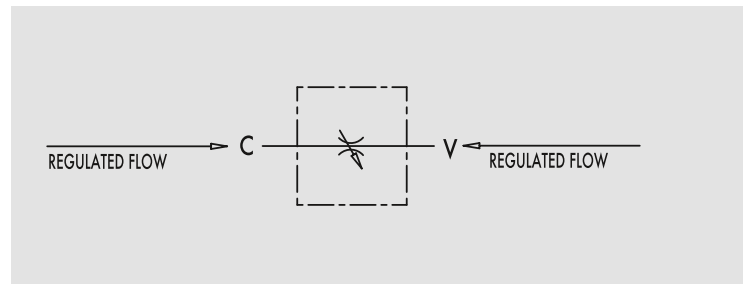


## Drosselventil - einstellbar

TYPE  
**VRB**



HYDRAULIC DIAGRAM



## BARREL FLOW CONTROL VALVES NO CHECK

### USE AND OPERATION:

This valve is used to adjust flow speed of actuators in both directions. As pressure compensation is not provided, flow adjustment depends on pressure and oil viscosity.

### MATERIALS AND FEATURES:

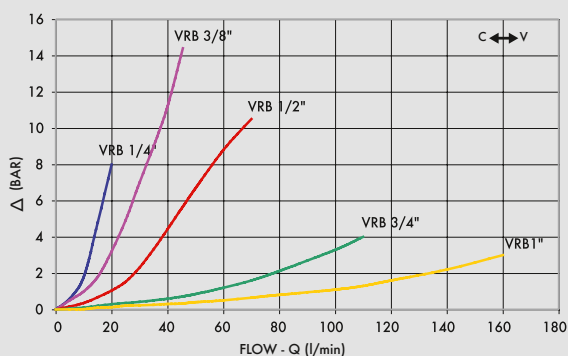
Body: zinc-plated steel  
Internal parts: hardened and ground steel  
Seal: BUNA N standard  
Tightness: by diameter combination. Minor leakage with closed valve

### APPLICATIONS:

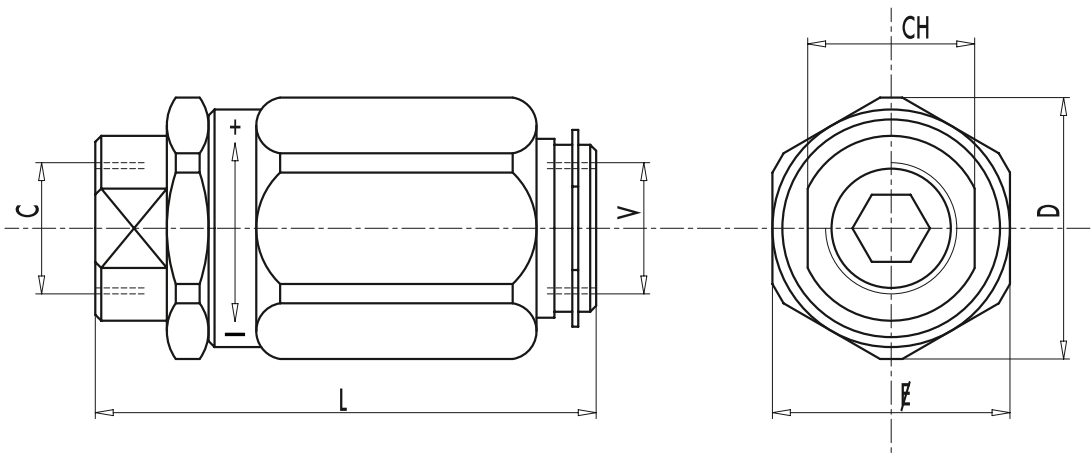
Connect V to the pressure flow and C to the actuator to set; when used on actuator with double pilot check valve, VRB has to be mounted between the actuator and the double pilot check valve. Flow adjustment is made by rotating the coupling: by clockwise rotation flow increases and vice versa. Once the flow has been set, lock the nut in order to keep the desired settings even in case of vibrations.

PRESSURE DROPS CURVE

Oil temperature: 50° C - Oil viscosity: 30 cSt



CODE	TYPE	MAX FLOW Lt. / min	MAX PRESSURE Bar
<b>V0545</b>	VRB 1/4"	20	300
<b>V0555</b>	VRB 3/8"	45	300
<b>V0565</b>	VRB 1/2"	70	300
<b>V0575</b>	VRB 3/4"	110	250
<b>V0585</b>	VRB 1"	160	250



CODE	TYPE	V - C GAS	L mm	L1 mm	CH mm	D mm	WEIGHT kg
<b>V0545</b>	VRB 1/4"	G1/4"	66,5	30	19	34	0,266
<b>V0555</b>	VRB 3/8"	G3/8"	73	32	24	36	0,312
<b>V0565</b>	VRB 1/2"	G1/2"	80	38	27	42	0,456
<b>V0575</b>	VRB 3/4"	G3/4"	95	46	32	51	0,784
<b>V0585</b>	VRB 1"	G1"	109	55	41	60	1,222