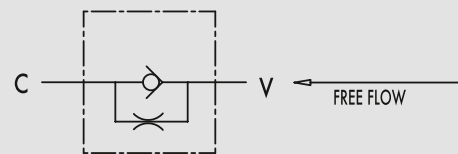


## Drosselrückschlagventil - festeingestellt

TYPE  
**VUSF**

HYDRAULIC DIAGRAM



## FIXED SETTING THROTTLE CHECK VALVES

### USE AND OPERATION:

Flow is free in one direction and fixed in the reverse one. Flow is fixed as flow adjustment depends on the throttling hole diameter.

### MATERIALS AND FEATURES:

Body: zinc-plated steel  
Internal parts: hardened and ground steel  
Seal: BUNA N standard  
Poppet type: standard

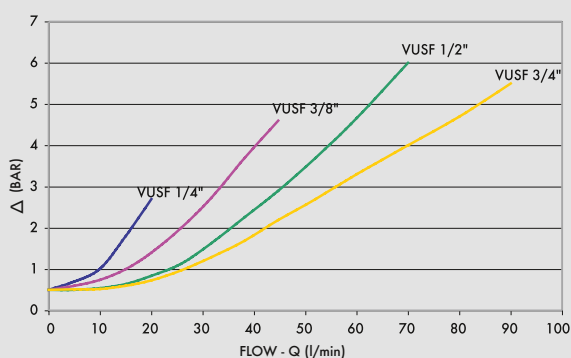
### APPLICATIONS:

Connect V to the pressure flow and C to the actuator. Flow is free from V to C and fixed in the reverse one. Throttling is obtained through one or two calibrated holes, the diameter of which has to be specified in the order.

### ON REQUEST:

- other settings available: 1-3-5-8 Bar ( please specify in the description the desired setting)

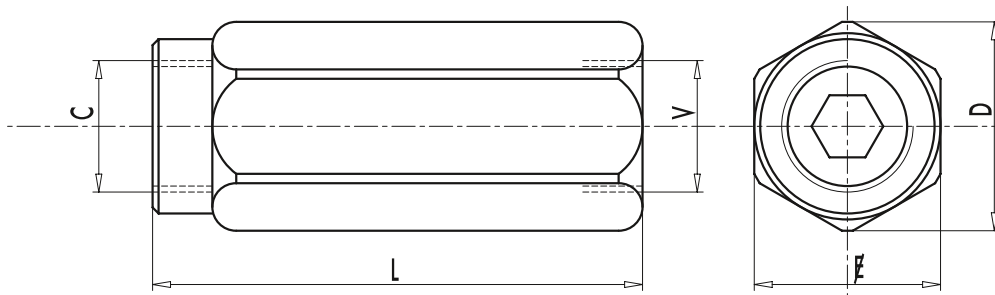
PRESSURE DROPS CURVE



Oil temperature: 50° C - Oil viscosity: 30 cSt



CODE	TYPE	MAX FLOW Lt. / min	MAX PRESSURE Bar	CRACKING PRESSURE Bar
<b>V0590/*</b>	VUSF 1/4"	20	350	±0,4/0,7
<b>V0600/*</b>	VUSF 3/8"	45	350	±0,4/0,7
<b>V0610/*</b>	VUSF 1/2"	70	350	±0,4/0,7
<b>V0620/*</b>	VUSF 3/4"	110	350	±0,4/0,7
<b>V0630/*</b>	VUSF 1"	160	350	±0,4/0,7
<b>V0631/*</b>	VUSF 1" 1/4	200	350	1
<b>V0632/*</b>	VUSF 1" 1/2"	300	350	1



CODE	TYPE	V - C GAS	L mm	E mm	D mm	WEIGHT kg
<b>V0590/*</b>	VUSF 1/4"	G1/4"	62	19	21	0,104
<b>V0600/*</b>	VUSF 3/8"	G3/8"	68	24	26,5	0,184
<b>V0610/*</b>	VUSF 1/2"	G1/2"	77	30	34	0,322
<b>V0620/*</b>	VUSF 3/4"	G3/4"	88	36	40	0,492
<b>V0630/*</b>	VUSF 1"	G1"	105	41	46	0,676
<b>V0631/*</b>	VUSF 1" 1/4	G1" 1/4	135	55	63	1,646
<b>V0632/*</b>	VUSF 1" 1/2"	G1" 1/2	145	60	69	1,950

\*: CODE/1F: valve with calibrated hole, please specify hole's dimension. Ordering example: VUSF 1/4" 1 HOLE DIAM. 2 mm • PART NR = V0590/1F

\*: CODE/2F: valve with 2 calibrated holes, please specify holes dimension. Ordering example: VUSF 1/2" 2 HOLES DIAM. 1 mm • PART NR = V0610/2F