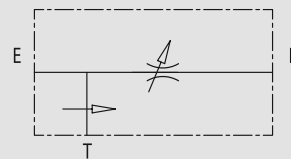


3-Wege Stromregelventil mit drucklosem Restölstrom

TYPE
RFP3



HYDRAULIC DIAGRAM



3 PORT FLOW CONTROL VALVE EXCESS TO TANK

USE AND OPERATION:

This valve enables to keep "P" flow constant to a certain setting, independently of the required pressure or the inlet flow of the valve. Exceeded flow is drained directly in T (tank).

MATERIALS AND FEATURES:

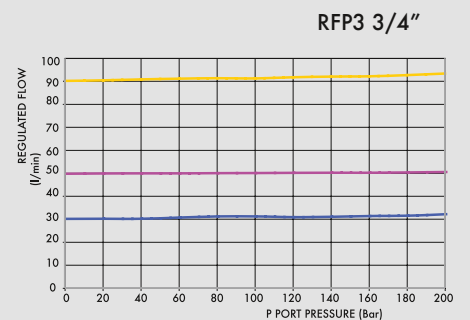
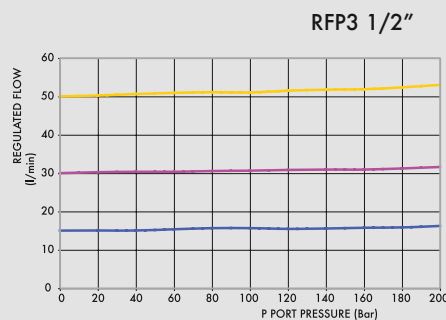
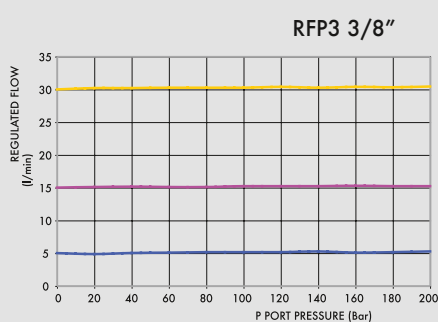
Body: zinc-plated steel
Internal parts: hardened and ground steel
Seal: BUNA N standard
Tightness: by diameter combination. Minor leakage (few drops per minute)

APPLICATIONS:

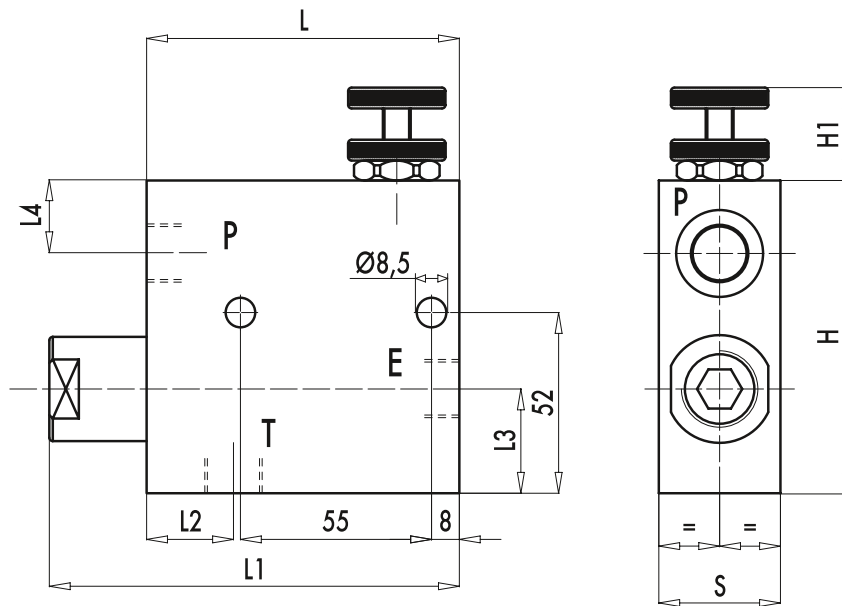
Connect E to the pressure flow and P to the net where flow adjustment is needed. Connect T to the tank. To adjust inlet pressure in P screw in or off hand wheel after loosening the locknut.

COMPENSATION CURVE

Oil temperature: 50° C - Oil viscosity: 30 cSt



CODE	TYPE	MAX INLET FLOW Lt. / min	MAX ADJUSTED FLOW Lt. / min	MAX PRESSURE Bar
V1110	RFP3 3/8"	60	50	350
V1120	RFP3 1/2"	80	60	350
V1130	RFP3 3/4"	120	100	350



CODE	TYPE	E - P - T GAS	L mm	L1 mm	L2 mm	L3 mm	L4 mm	H mm	H1 mm	S mm	WEIGHT kg
V1110	RPF3 3/8"	G3/8"	90	118	25	32	20	90	40	35	2,170
V1120	RPF3 1/2"	G1/2"	90	118	25	32	20	90	40	35	2,096
V1130	RPF3 3/4"	G3/4"	90	122	27	36	19	102	40	50	3,344