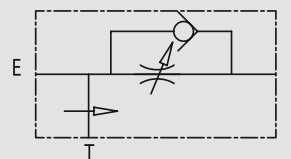


3-Wege Stromregelventil mit drucklosem Restölstrom und Umgehungsrückschlagventil

TYPE
RFP3 VU



HYDRAULIC DIAGRAM



3 WAYS FLOW CONTROL VALVE EXCESS TO TANK WITH CHECK VALVE

USE AND OPERATION:

This valve enables to keep "P" flow constant to a certain setting, independently of the required pressure or the inlet flow of the valve. Exceeded flow is drained directly in T (tank). The check valve allows those applications where we require the return of the free flow.

MATERIALS AND FEATURES:

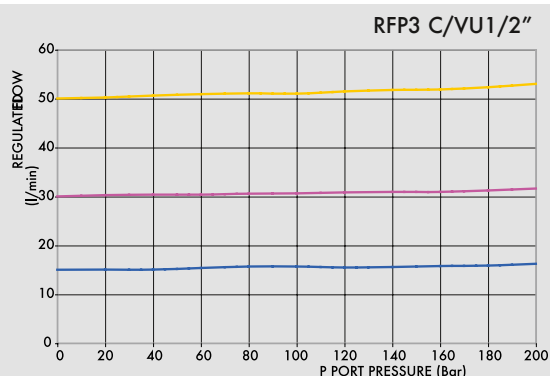
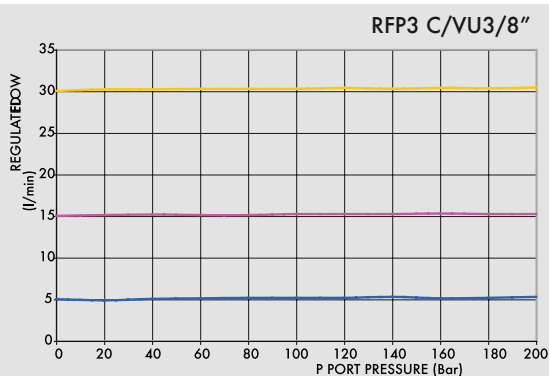
Body: zinc-plated steel
Internal parts: hardened and ground steel
Seal: BUNA N standard
Tightness: by diameter combination.
Minor leakage (few drops per minute)

APPLICATIONS:

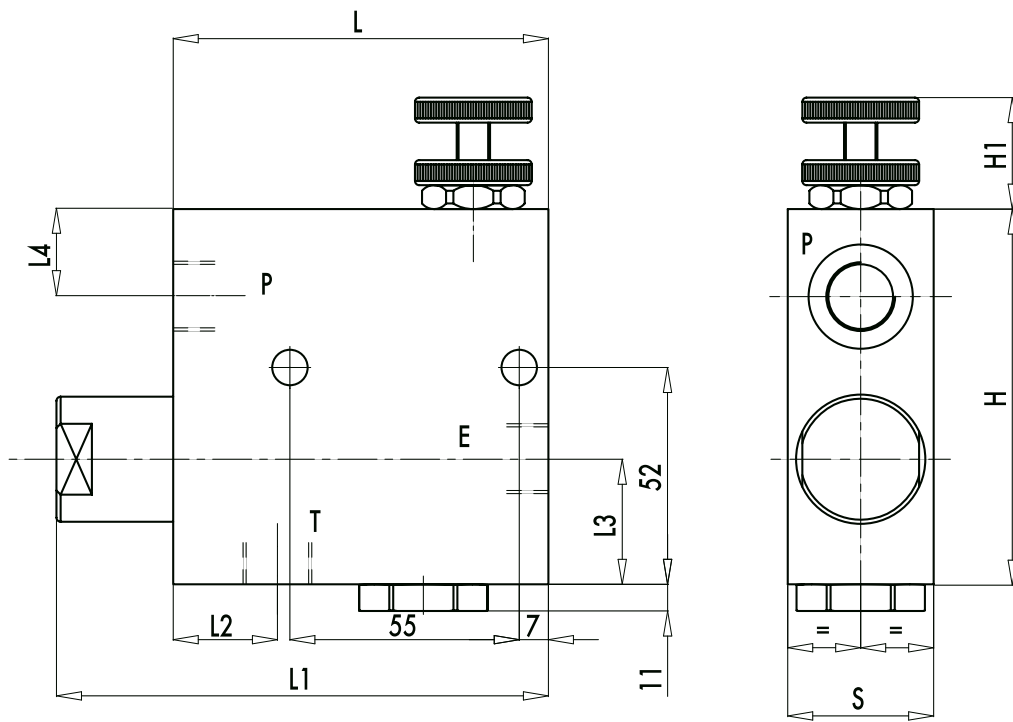
Connect E to the pressure flow and P to the net where flow adjustment is needed. Connect T to the tank. To adjust inlet pressure in P screw in or off hand wheel after loosening the locknut.

COMPENSATION CURVE

Oil temperature: 50 ° C - Oil viscosity: 30 cSt



CODE	TYPE	MAX INLET FLOW Lt. / min	MAX ADJUSTED FLOW Lt. / min	MAX PRESSURE Bar
V1110/VU	RFP3 3/8" c/VU	60	50	350
V1120/VU	RFP3 1/2" c/VU	80	60	350



CODE	TYPE	E - P - T GAS	L mm	L1 mm	L2 mm	L3 mm	L4 mm	H mm	H1 mm	S mm	WEIGHT kg
V1110/VU	RFP3 3/8" c/VU	G3/8"	90	118	25	32	20	90	35	40	2,200
V1120/VU	RFP3 1/2" c/VU	G1/2"	90	118	25	32	20	90	35	40	2,100